

Brief operation introduction of All In One Computer

Installation Process:

- (1) Put the computer flat on the desk.
Pull the chassis backward till it's flat.
- (2) Pull the screen and the chassis leftward respectively
- (3) Fix up the chassis and then pull the screen to the correct position
- (4) Do use the knighthood to yoke the chassis tightly
- (5) Then the installation is finished.

Connect with the phone line and the electrical wire

There are several groups interfaces back :

Printer interface: connect with the printer

Phone line interface: connect with the network computer by phone line.

USB interface: connect with kinds of USB peripheral equipment.

Power interface: connect with the power supply.

The operation of the keyboard and the mouse

1. The control key of mouse direction: control the direction of the mouse.
2. The confirmation key of mouse: confirm the selection of the mouse.
Caps lock key: to transfer the capital words into the lowercase
3. Select the mark above the number keys, (~ ! @ # \$ % ^& and so on), such as "*", press the "Shift" button , at the same time press the "8".
4. Input the information or the website into the address box, press this

button to link the internet.

5. There are some buttons under the LCD, the two buttons in the left is to adjust the brightness of the LCD. The button in the middle is to adjust the voice of the computer. The button in the right is the power button.

Start the all in one

After connecting with the keyboard, phone line, USB card and other equipments, press the power button gently to start the computer.

Shut off the all in one

Press the power button .

Maintain

In order to maintain the All In One computer well, please notice:

1. Do not touch and strike the LCD screen with finger.
2. when it is running , do not remove or shake the LCD screen.

The hardware of the specification of the All In One Computer:

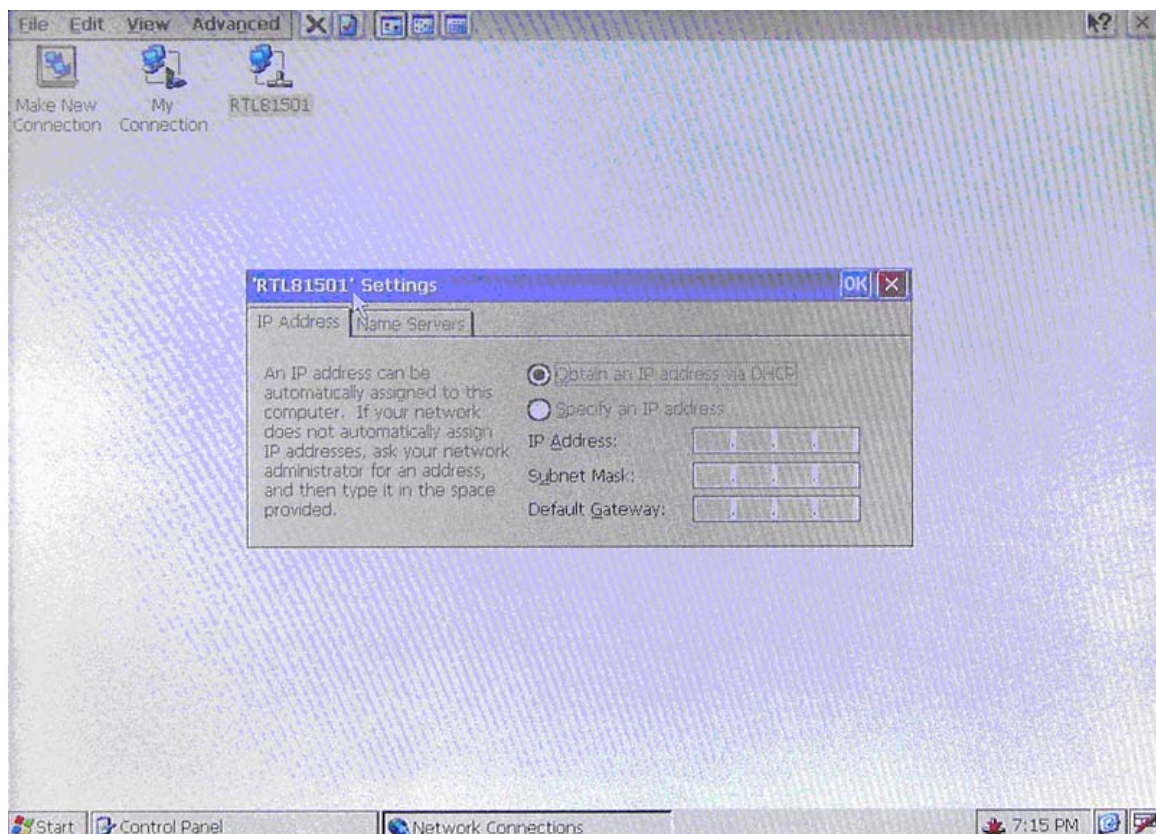
Hardware	Support
266MHZ CPU	HTML
SDRAM64MB/MAX128MB	HTTP
FLASHDISK(DOM)32MB/MAX384MB	JAVASCRIPT
56K MODEM	GIF/JPEG/PNG/ANIMATED GIF
KEYBOARD AND MOUSE	MACROMEDIA FLASH
LCD 10" DUAL SCAN	OTHERLANGUAGE:TRADITIONAL &SIMPLIFIED

The operation in common use

The operation in common use can find in the “start” menu. Such as DOCVIEWER, PDFVIEWER and so on can browse related document, WORDPAD can compile or edit WORD doc document. IESAMPLE is the tool to browse the Internet. Use it , you can browse the Internet pages quickly.

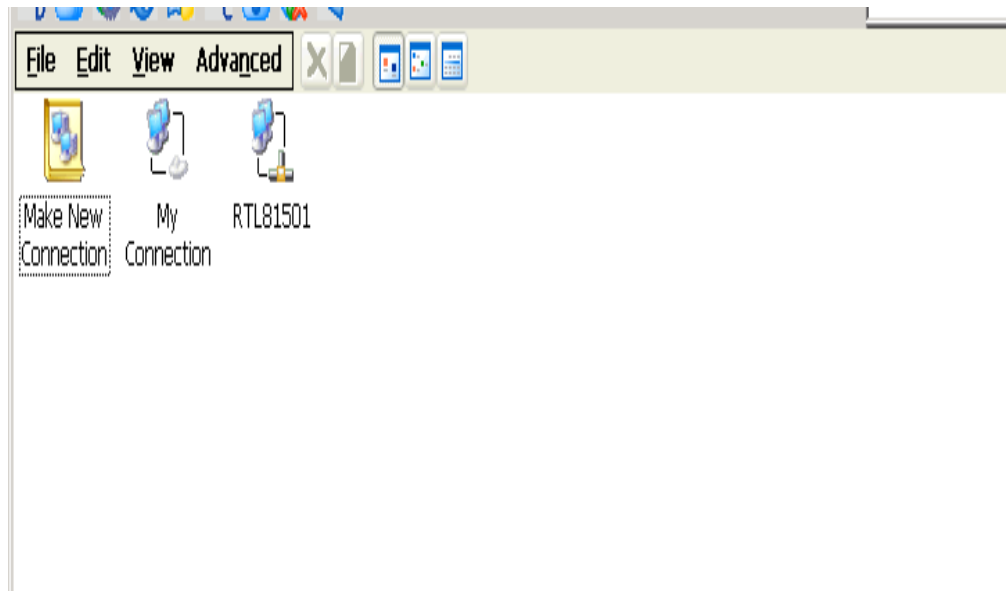
Click the “start” menu, point the “process”__“cetsc”, click the mouse(the button in top left corner of the keyboard),input the IP address of the server in that page, then can link the remote server to use the hardware and software source of the server.

Set up the IP directly in the LAN(can also obtain the IP automatically), then can link the internet. Shows as follows:

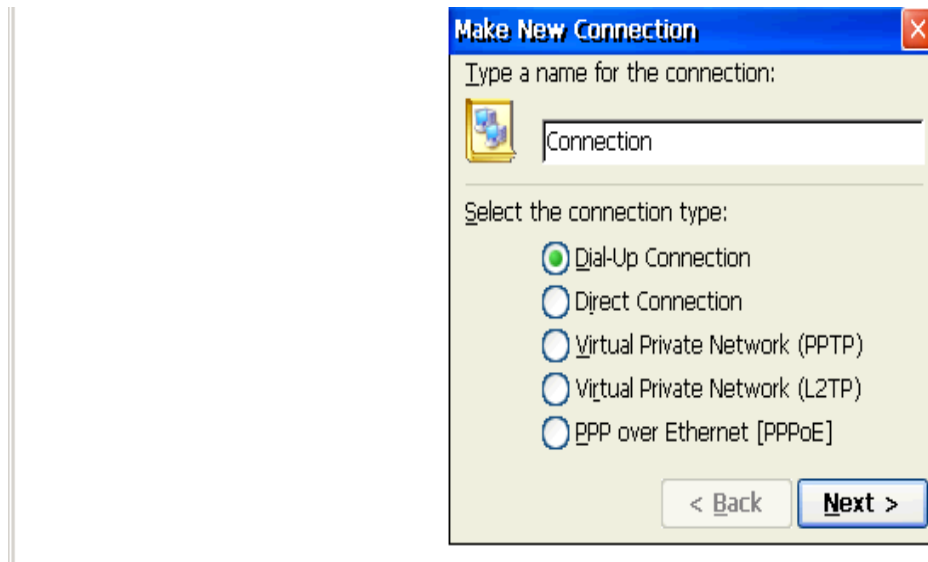


Setting up dial-up connection as follows:

Make a new connection



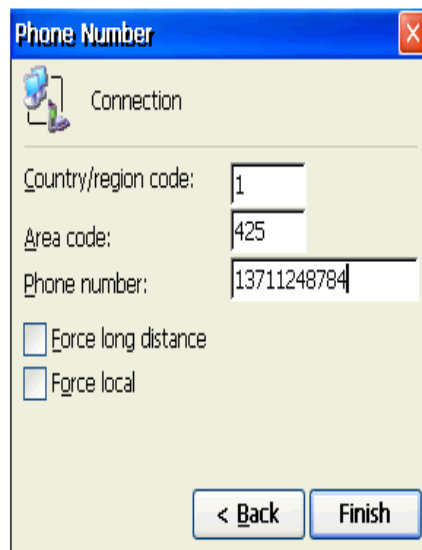
1. Make a new connection, shows as follows:



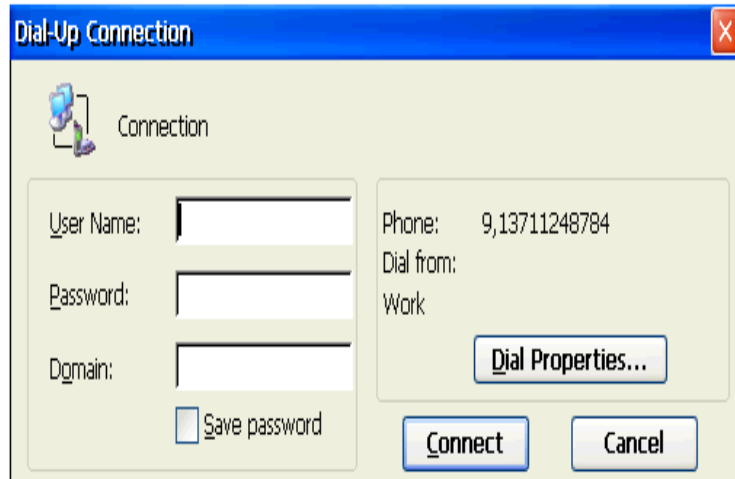
2. Select a modem, shows as follows:



3. default other items , press “next”, input the phone number, shows as follows:



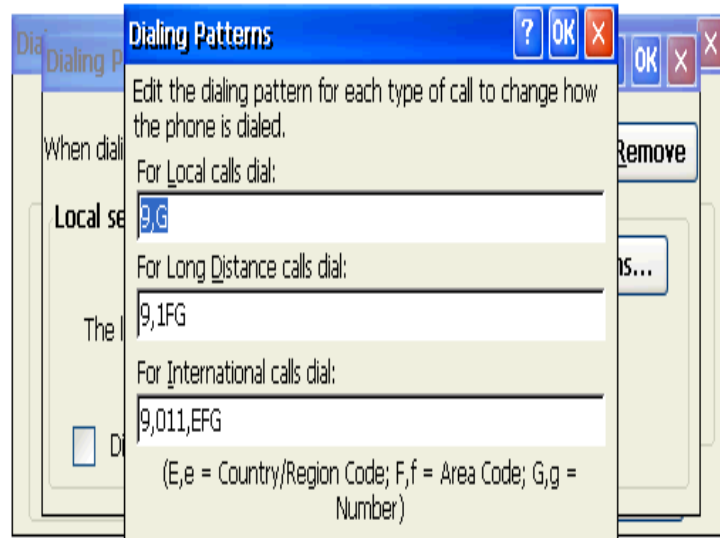
4. double-click the new connection, shows as follows:



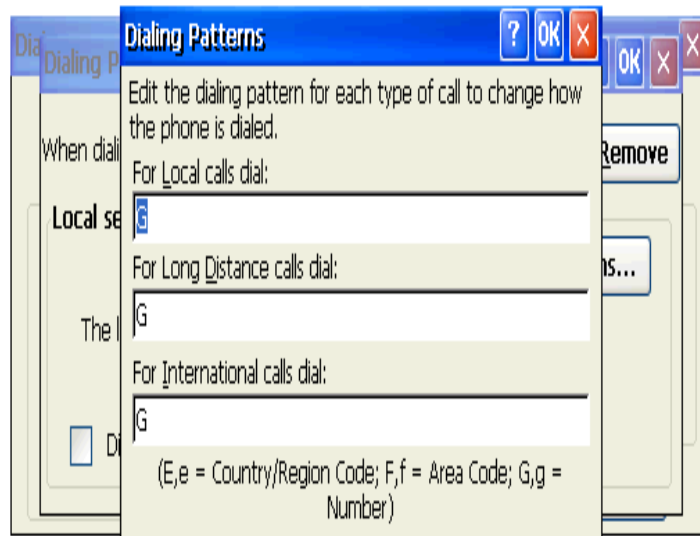
5. click the “Dial Properties”, appears the picture as follows:



6. click the “Dial Patters”, then appears the pictures as follows:



7. change all into G, shows as follows.



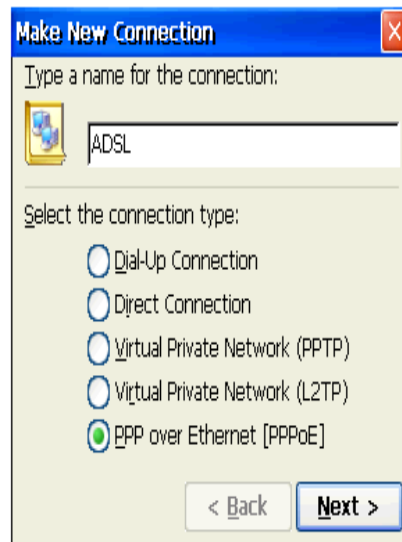
8. click "OK", turn back the Dial -up Connection, shows as follows:



9. Default other items, click “connect”, then it can link the Internet.

Use PPPoE to the Internet

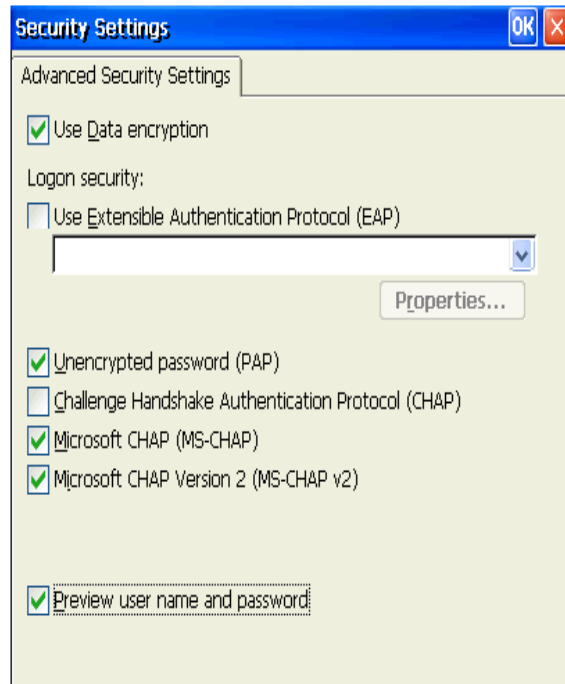
1. Make a new connection, choose “PPP over Ethernet (pppoe)”, shows as follows:



2. default other items, shows as follows:

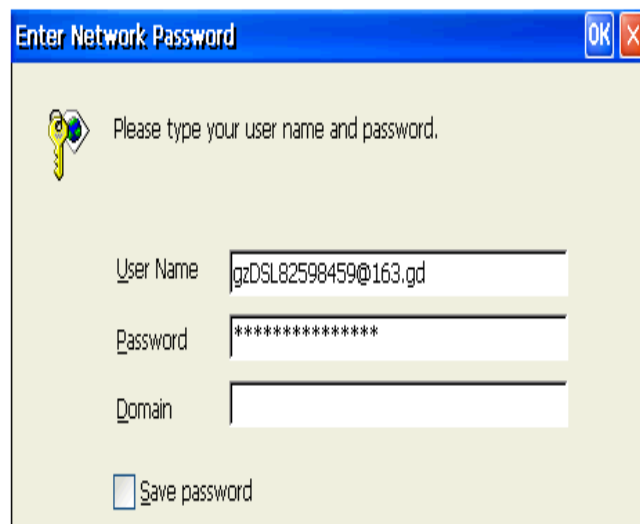


3. click “Security Settings..” choose “Unencrypted password (PAP)” and “Preview user name and password”, shows as follows:



4. click “OK”, “finish”, then can build a ADSL connection.

5. double-click it, input the ADSL account and the password, shows as follows:



6. click “OK”, then can link the internet.